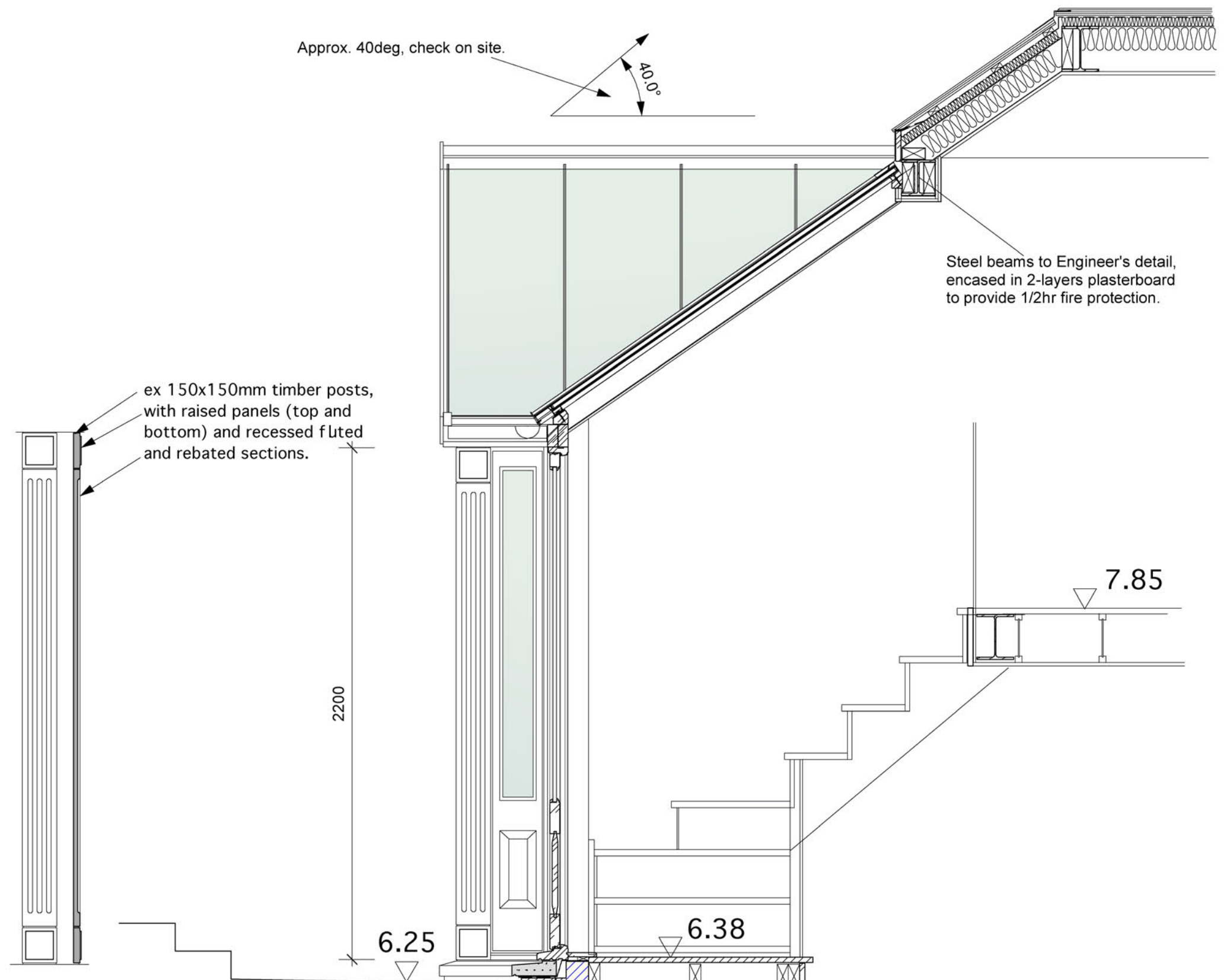




Elevation

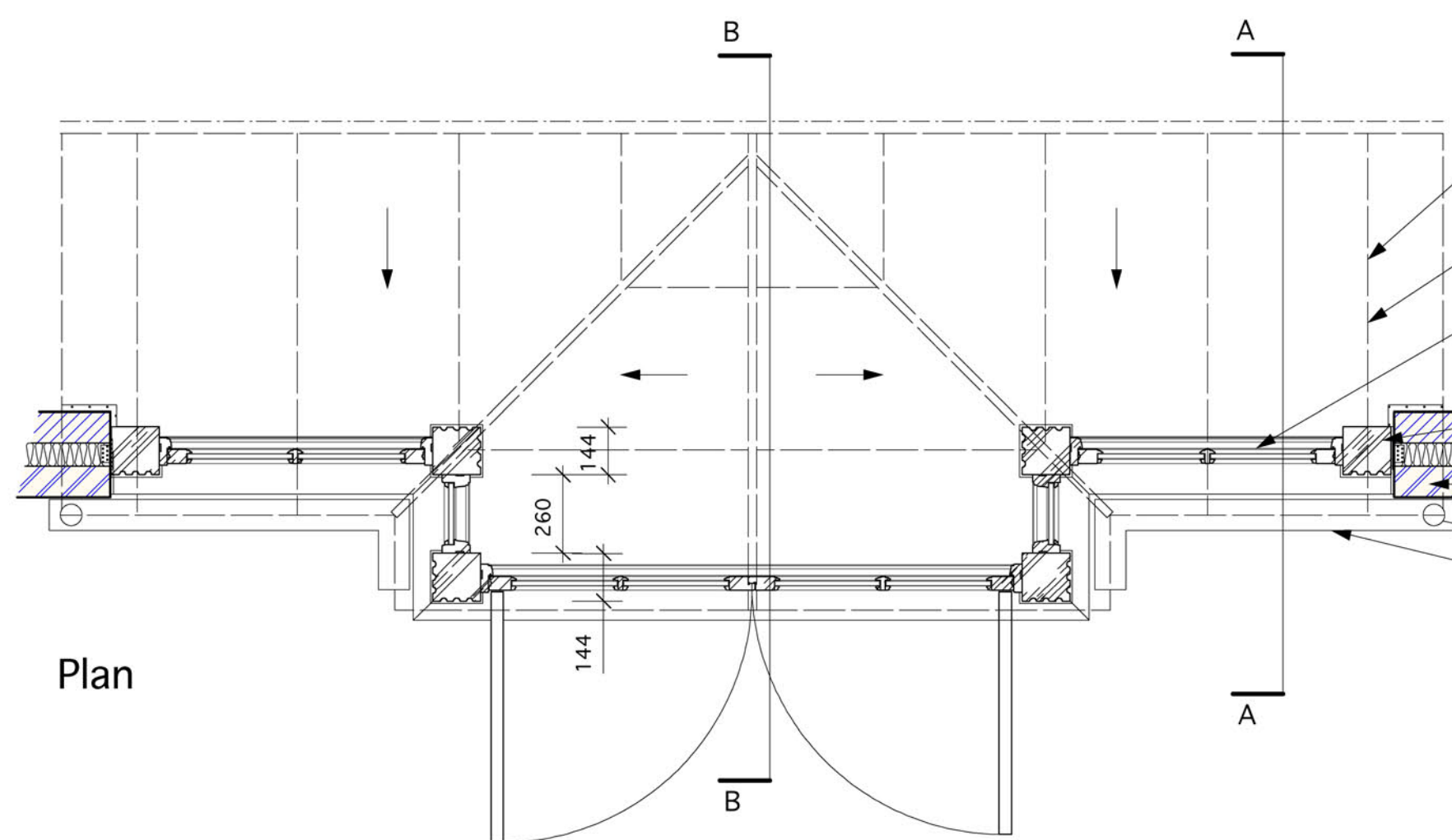
2020

4100



Post Profile

Section AA



Plan

- Lonsdale Thermguard Al. Patent Glazing system with powder coated finish.
- ex 100x50mm timber rafters to glazed roof
- Double-glazed timber doors, with raised & fielded panels
- ex 150x150mm timber posts
- Brickwork walls
- 68mm uPVC RWP
- 100mm half-round uPVC guttering

Approx. 40deg, check on site.

40.0°

Steel beams to Engineer's detail, encased in 2-layers plasterboard to provide 1/2hr fire protection.

ex 150x150mm timber posts, with raised panels (top and bottom) and recessed fluted and rebated sections.

7.85

6.25

6.38

5.29

A Jun08 Levels amended

REV DATE

REVISIONS

DRAWINGS NOT TO BE SCALED, FIGURED DIMENSIONS ONLY  
DRAWINGS NOT TO BE USED FOR LAND TRANSFER PURPOSES  
DRAWINGS TO BE READ IN CONJUNCTION WITH RELEVANT  
DRAWINGS AND SPECIFICATIONS

© FAITHFULL ARCHITECTS



+44 (0)20 8767 8888

CLIENT

PROJECT

DRAWING TITLE

Rear Elevation  
Details (sheet 1)

SCALE 1:20 @ A2 DATE June 2008

DRAWN DRAWING No. 499/C/10 REV A

CHECKED